

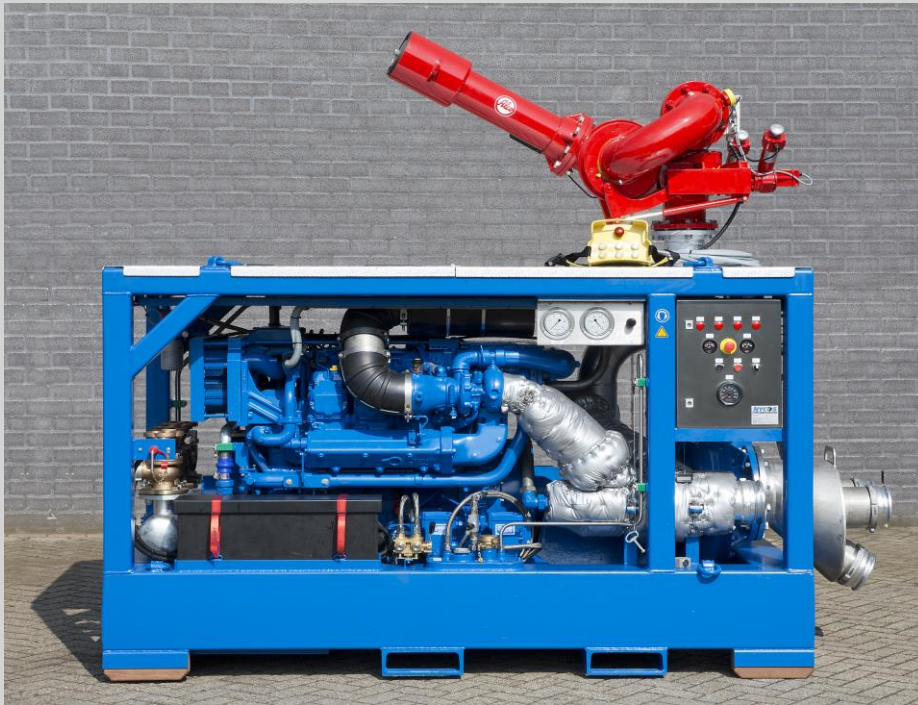
- Hydraulic & Control Systems
- Dredgers, tugs and offshore applications
- Custom built diesel powerpacks
- Worldwide service, modifications and overhaul

# HYCOS<sup>®</sup>

**Hydraulics & Control Systems**

This leaflet keeps you posted about our products and other facts about HYCOS

## *FiFi 690*



### **690 m<sup>3</sup> / hr Mobile Fire Fighting set**

The FiFi 690 is a standardized FiFi set intended for mobile application in marine environments.

The drive motor is a Deutz 1013 V6 diesel engine, which is a mechanical engine. Especially in environments characterized by salt spray customers the mechanical engines have the advantage of not stopping in case of electrical faults – the engine is set up that it has to be stopped manually based on the alarms on the panel.

The pump is a standard Nijhuis pump. Durable and proven in many hours of operation. To prime the pump Hycos has developed an innovative Vacuprime system. This system consists of a V-belt driven vacuum pump that will prime the pump in approx. 45 seconds with the engine at idle speed. The vacuum pump switches off when the pump pressurizes and the FiFi 690 is ready for operation !

This innovative feature makes priming pumps, suction line checkvalves or submersible pumps obsolete in all cases where the water level is up to 5 m lower than pump position.

The FiFi 690 is fitted with an Alco remote operated monitor ( IP 67) which can be turned 360 ° and can vary between a long reach or a spray screen. In addition to this, there are 4 x 2,5" water connections, 1 x 4 " connection and also a 6" connection is provided !

A sturdy steel frame, transportable either by forklift or by corner hoists and a simple relay control panel complete the FiFi 690, to make it a real workhorse under FiFi sets !

HYCOS B.V.  
Lissenveld 69  
4941 VL Raamsdonksveer  
the Netherlands  
Phone: +31(0)162 582 323

**HYCOS<sup>®</sup>**  
**Hydraulics & Control Systems**

## SPECIFICATIONS



### DIESEL DRIVE

---

Make and model	Deutz 1013 V6 mechanical engine
Emissions	IMO
Type	water cooled, direct injection
Aspiration	turbo charged and inter cooled
No. of cylinders	6
Power	300 kW @ 2100 rpm



### ELECTRIC SYSTEM

---

System	24 VDC
Batteries	2 x 12 VDC, 200 Ah
Alternator	70 A
PLC	Not present
Protection Rating	IP65



### FiFi PUMP

---

Make and model	Nijhuis NC 1-150520S
Rated flow, main	690 m <sup>3</sup> / hr @ 5,1 mlc
Rated flow, min. NPSH	600 m <sup>3</sup> /hr @ 4,4 m mlc
Pressure	12 bar
Priming system	twin piston vacuum pump, V-belt driven
Monitor	Alco HR 377, remote operated



### CONNECTIONS

---

- 3 x 6" Suction hoses ( included in supply)
- 4 X 2,5" Pressure connections with valves and Storz connects
- 1 X 4" Pressure connection ( flange)
- 1 X 6" Pressure connection ( flange )
- 1 x 1" Foam connection



## SERVICE CAPACITY

Full tank	400 l ( external fuel connection available)
Engine oil	20 l
Engine coolant	35 l
Duplex fuel filter installed	

## DIMENSIONS

Weight	3300 kg without monitor, suction piece and fuel
Length	2600 mm
Width	1400 mm
Height	1600 mm



[www.hycos.com](http://www.hycos.com)

